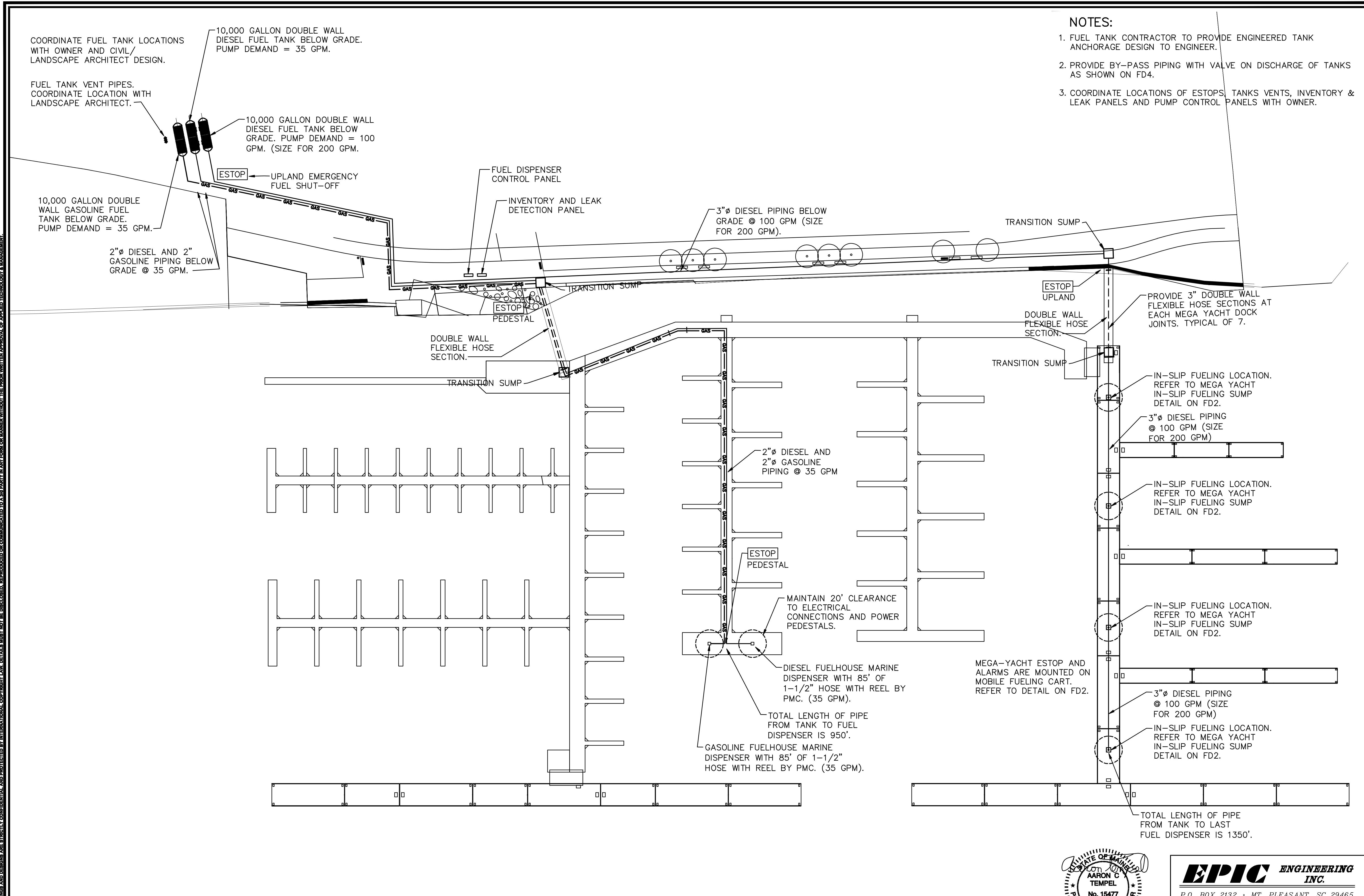


VENDOR SPECIFICATIONS SHALL GOVERN. SEE SPECIFICATIONS FOR DETAILS. THIS NOTE, THESE DRAWINGS AND DESIGN ARE STRICTLY CONFIDENTIAL AND PROTECTED BY INTERNATIONAL COPYRIGHT LAW. DETAILS MUST NOT BE DISCLOSED, REPRODUCED OR COMMUNICATED TO A THIRD PARTY IN ANY FORM OR MANNER WITHOUT THE PRIOR WRITTEN APPROVAL OF APPLIED TECHNOLOGY & MANAGEMENT.



- NOTES:**
- FUEL TANK CONTRACTOR TO PROVIDE ENGINEERED TANK ANCHORAGE DESIGN TO ENGINEER.
 - PROVIDE BY-PASS PIPING WITH VALVE ON DISCHARGE OF TANKS AS SHOWN ON FD4.
 - COORDINATE LOCATIONS OF ESTOPS, TANKS VENTS, INVENTORY & LEAK PANELS AND PUMP CONTROL PANELS WITH OWNER.

Signature
 Aaron C. Tempel, P.E.
 ME Professional Eng. PE 15477
 6/28/2018

REV.	DATE	DRAWN	CHECKED	BY	ACT

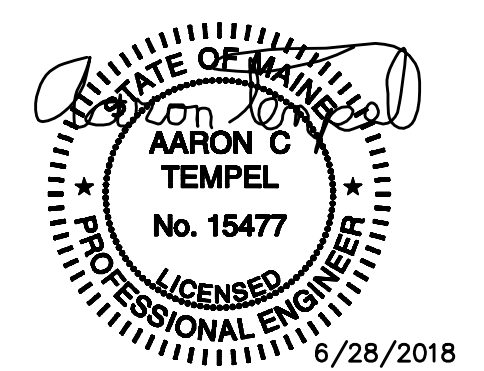
DESIGNED: MARINA
 ACT: PORTLAND, MAINE
 DATE: 02/18
 JOB NO.: 18001
 SCALE: 1" = 40'-0"

MARINA FUEL DISPENSING PLAN
 PORTLAND FORESIDE DEVELOPMENT COMPANY
 PORTLAND, MAINE

Applied Technology & Management, Inc.
 941 Houston Northcutt Blvd., Suite 201
 Mt Pleasant, SC 29464
 (843) 414-1040
 Certificate of Authorization #00386

ATM
 DRAWING NUMBER
FD4
 SHEET: 4 OF 7

MARINA FUEL DISPENSING PLAN
 SCALE: 1"=40'-0"



EPIC ENGINEERING INC.
 P.O. BOX 2132 • MT. PLEASANT, SC 29465
 (843) 849-6878 EPIC JOB NO. 18001
COPYRIGHT © 2018 THIS DOCUMENT IS THE PROPERTY OF EPIC ENGINEERING, INC. ANY UNAUTHORIZED REPRODUCTION OR USE IS PROHIBITED AND SUBJECT TO LEGAL PROSECUTION